

2008 Eaglesfield Park Management Plan



Yacht Pond, Eaglesfield Park, c 1912

PART I: WHERE WE ARE NOW	3
<i>INTRODUCTION:</i>	3
What is a park management plan?	3
What is the purpose of this management Plan?	3
<i>SITE DESCRIPTION AND INFORMATION BASE</i>	5
Brief Description	5
Infrastructure.....	7
Biological.....	8
Current Management Arrangements.....	9
Community Information	10
Summary.....	12
PART II: WHERE DO WE WANT TO GET TO	13
<i>VISION FOR THE PARK</i>	13
General Objectives (DRAFT)	13
<i>ANALYSIS & ASSESSMENT</i>	14
Heritage	14
Ecology/Biodiversity.....	14
Landscape and Trees	14
Furniture and Fencing.....	14
Management.....	15
Staff Presence	15
Litter.....	15
Dogs in parks.....	15
Visitor & Community Needs.	15
Anti Social Behaviour (ASB).....	16
Consultation	17
<i>STRENGTHS</i>	18
<i>CHALLENGES</i>	18
<i>RECOMMENDATIONS</i>	18
PART III: HOW WILL WE GET THERE	19
<i>ACTION PLAN</i>	19
PART IV: HOW WILL WE KNOW WHEN WE'VE ARRIVED	23
<i>MONITORING AND REVIEW</i>	23
APPENDIX I: Legislation, policies and strategies affecting park management	24
APPENDIX II. Brief History of the park	29
APPENDIX III: Parks and Open Spaces Management Structure	30
APPENDIX IV: Meadow Survey	31
APPENDIX V: Annual Maintenance Model	Error! Bookmark not defined.

PART I: WHERE WE ARE NOW

INTRODUCTION:

What is a park management plan?

Management Plans are an important aid to the efficient and effective management of any site. A Plan forms part of a process for evaluating performance, consulting and involving people, strategic planning and providing continuity. Individual plans will be specific to each park and will deliver aims and objectives specific to the needs of the local community who will be directly involved in its formulation.

A Park Management Plan also provides an excellent opportunity to collate a wealth of information relating to the park that the management authority possesses, into a single comprehensive document.

If you require any further details about this plan please contact:

Address: Parks & Open Spaces:
Shooters Hill depot
Opposite Eaglesfield Rd
Woolwich
SE18 4LX

Tel. 020 8856 2232
Email parks@greenwich.gov.uk

This park is allocated a technical officer who can be contacted for any further information (using the contact details provided above).

Friends of Eaglesfield Park Contact information:
Angela Hayes (Chair)
0208 333 9397 / angela.hayes3@ntlworld.com

Peter Taverner (Treasurer and Membership)
peter.taverner@btinternet.com

Michelle Smith (Secretary)
steve.feelfine@btinternet.com

What is the purpose of this management Plan?

As well as developing a Green Space Strategy, the production of individual management plans for each park is good practice and is in accordance with the Council's commitment to providing Best Value.

This Management Plan is intended to provide a vital resource for parks staff in maintaining and developing Eaglesfield Park as a resource for the community and will be under constant informal review, with an annual review of progress (of the action plan) and continuing management prescription and a 5 year comprehensive review in 2012.

Full details of the public consultation used to create this plan can be found in Appendix x (ONCE UNDERTAKEN) of this plan.

It is expected that the plan will provide a framework within which any future decisions concerning this site will be taken and that the rolling reviews will inform future strategic and management planning. In addition, it is hoped that the management plan for Eaglesfield Park will assist with allocating existing and securing additional resources for developments on this site that this management plan specifies.

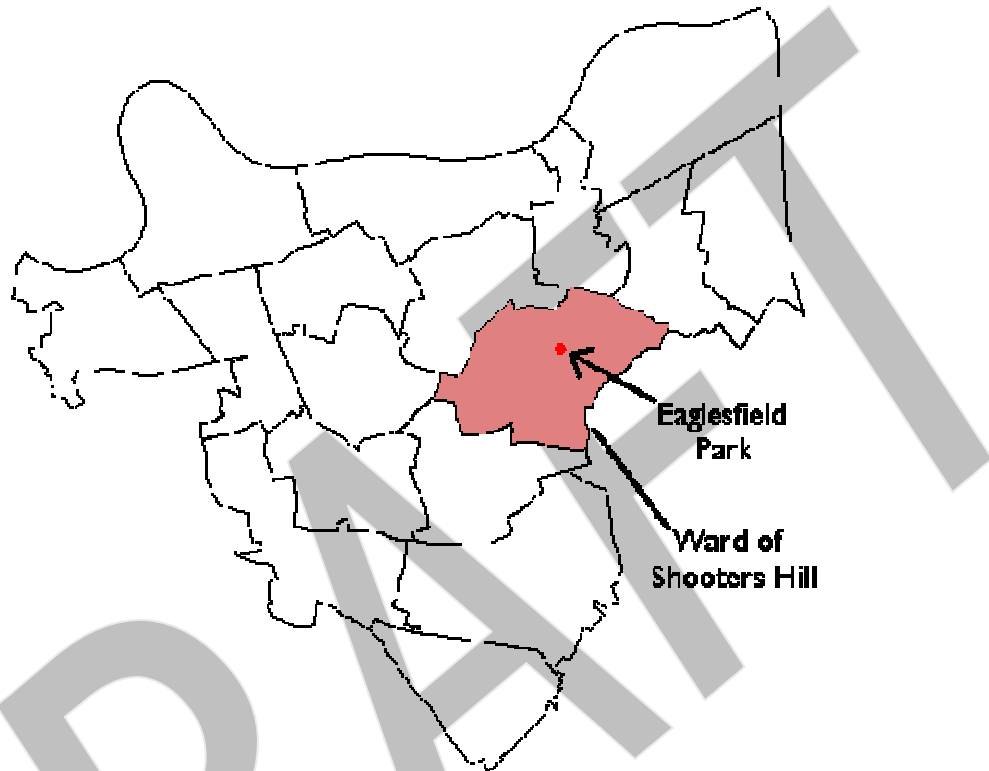
Future actions/priorities for this site are identified in the action plan to this document. This management plan therefore provides a benchmark against which future progress can be measured.

SITE DESCRIPTION AND INFORMATION BASE

Brief Description

Eglesfield Park is a park of 3.62 hectares located approximately 3 miles northeast of Eltham town centre and 1.3 miles southeast of the Woolwich town centre at the very summit of Shooters Hill in the Shooters Hill Ward of the London Borough of Greenwich (SE18 3DA). Details of Elected Members for this Ward are available from the Greenwich Council website:

www.greenwich.gov.uk or from the Town Hall, Woolwich (Tel: 02088548888)



Location of Eaglesfield Park within the Greenwich Borough

The summit of the hill within the park is the second highest point within the greater London area at 126 metres above [datum](#) (The highest point being Kenwood House, Hampstead Heath). The park is divided on a north/south axis by Eaglesfield Road, with the western side (upper park) maintained with formal amenity character and the eastern side (lower park) being maintained as meadowland. (Upper Eaglesfield = 2.43ha, Lower Eaglesfield Park = 1.16ha) It is bordered by the Shooters Hill Golf Course on its eastern side and urban housing on all other sides, being separated on the north and west sides by Cleanthus and Foxcroft Roads.

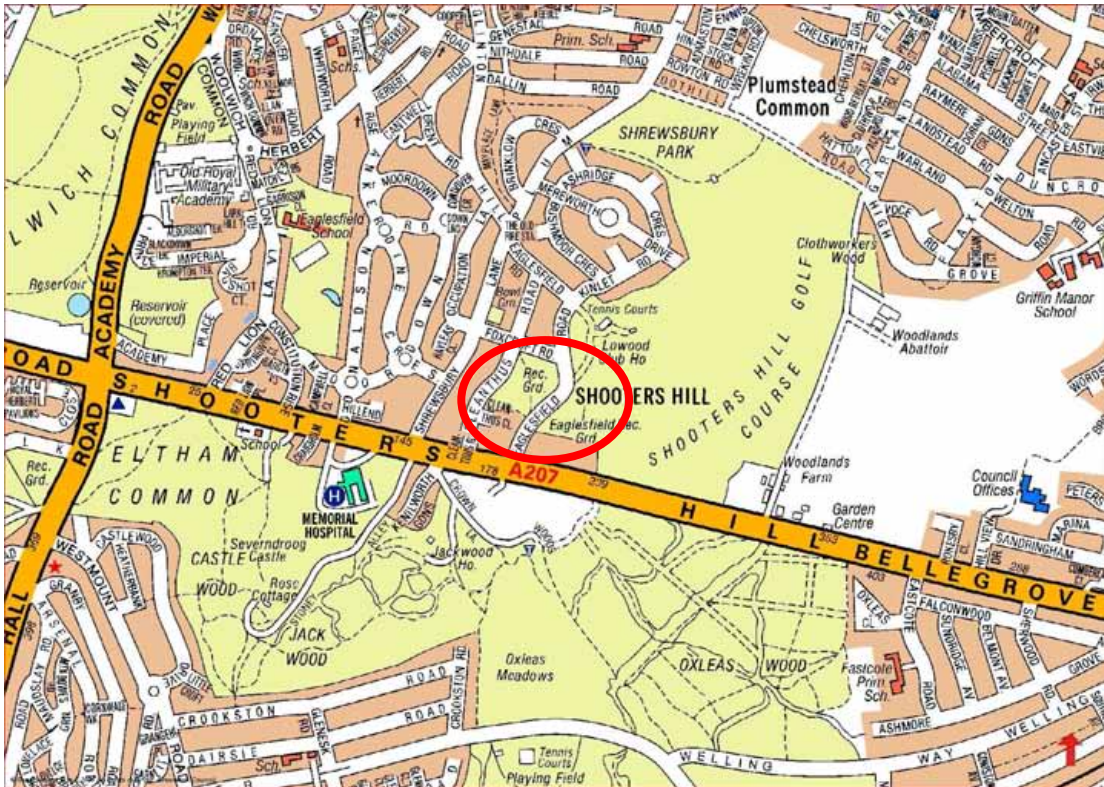


Diagram showing location of Eaglesfield Park

The ground on the formal area of the park is of varying slope, with the top area of the hill being mainly flat, and is at approximately 123 metres above sea level. The informal eastern area of the park is of gently sloping eastern aspect, and is approximately 120 metres above sea level. The underpinning geology in the western part of the park is Harwich formation that forms the cap of Shooters Hill, and the eastern part of the park is formed from the underlying London Clay.

Greenwich Council owns the park with management and maintenance being carried out by the Parks & Open Spaces Department, which is located within the Directorate of Culture and Community Services. There are no leases affecting Eaglesfield Park.

The Greenwich Council Green Space Strategy designates Eaglesfield Park's primary purpose as Local Park.

Other parks in the local area are; Shrewsbury Park 500 metres to the northeast, and Oxleas Woods 100 metres to the south.

Eglesfield Park enjoys an active and dedicated Friends group.

"...The view to the eastward from the ridge of the Hill, both by day and by night is impressive; the main road to Dover can be traced for many miles; by day the square miles of red roofs and by night the thousands of twinkling lights make one ponder over the question as to 'when will London reach the sea?...' (A.H.Bagnold)

Infrastructure

Paths and Access to the park

There is excellent pedestrian access to the formal park, as it is surrounded on the west, north and eastern sides by streets, with no fencing around the park.

The informal park area has an access to Eaglesfield road on its western side, but the path is mown as opposed to being paved. This is to encourage dog walkers to use this part of the park rather than the formal area.

There are 3 formal entrances (although as the formal area of the park is unfenced, many people just walk straight into the park), two to the formal park area (Corner of Cleanthus and Foxcroft Roads, and the western side of Eaglesfield Road), and one leading into the informal park area (eastern side of Eaglesfield Road).

Wheelchair and pushchair access to the formal area of the park can only be classified as adequate, as there is only one disabled access point to the park, being a ramp at the northern entrance to the formal park at the corner of Foxcroft and Cleanthus Road. This ramp may need to be measured against the standard slope of 1:14, as it was constructed before any guidelines for access were formalised, and appears to be approximately 1:10.

The park is part of the Green Chain walk, with the previous park on the walk being The Jackwood, and the subsequent park being Shrewsbury Park.

Watercourses and Water Features

The only water feature in the park is a small pond at the highest point of the hill. This pond is called 'The Lily Pond'. This pond is in the area that was formerly within the grounds of 'The Shrubbery'. The Lily pond has not had water in it for some time. The Friends of Eaglesfield Park have recently obtained a quote from a contractor to restore the pond and are seeking funding through a grant for its restoration.

Eaglesfield Park occupies the very top of Shooters Hill, and as mentioned, the upper park's underlying geology is composed of porous Harwich Formation on top of London Clay. This results in a perched water table that produces springs where the two layers meet. These springs at one stage could be found around the cap of Shooters Hill, but a combination of factors has resulted in a number of these springs drying up in the recent years.

Lower Eaglesfield Park has poor drainage because of its underlying London Clay geology, which, combined with the perched water table, means that it is wet for most of the year.

Furniture, Fencing and General Infrastructure

Seating, litter bins and picnic benches are generally in good condition.

The park is not fenced off from adjoining land, except on the southern side of the formal area, where it borders onto council owned residential properties and the south and east of the informal area, where it borders onto the Shooters Hill golf course (owned by the golf club).

The only fencing within the park is that around the Lily Pond and around the playground.

The fencing around The Lily Pond is a 3 foot high iron fence, and is prone to vandalism. The shrubbery area surrounding The Lily Pond provides a secluded area (the featheredge fence behind this area is routinely graffitied).

Play Facilities

As mentioned, Eaglesfield Park's playground was installed in the depression which was once a pond/Yacht Pond (Shown on front cover of this plan). The Yacht Pond was later turned into a paddling pool by the GLC and more recently, turned into a play area by Greenwich Council. The play area is accessible for disabled users.

Greenwich Council has adopted the standards prescribed by the National Playing Fields Association (NPFA) in the Six Acre Standard, Minimum Standards for Outdoor Playing Space.

The three categories for play provision are: - Local Area for Play (LAP), Local Equipped Area for Play (LEAP) and Neighbourhood Area for Play (NEAP).

All fixed equipment playgrounds in parks are managed by Parks and Open Spaces. The play equipment conforms to European Union standards EN1176 and EN1177 in regard to installation and surfacing. The equipment is visually inspected on a daily basis, with a more detailed inspection undertaken on a bi-monthly basis and an independent inspection on an annual basis.

A borough-wide assessment has also been introduced to assess disability access on children's playgrounds. An independent specialist undertakes this at the same time as the playground assessment.

Lighting

Currently, there is no lighting within the park. However, (street) lighting is provided around the perimeter of the park.

Buildings, Facilities and Structures

The only structure currently found within the park is a small ventilation outlet for the sewer fenced off near Eaglesfield Road.

Biological

Ecological Description

An ecological survey of Greenwich's meadows in parks and open spaces was commissioned by the Parks and Open Spaces department in August 2005. The survey was performed by Groundwork South East London and covers 12 meadows in 7 parks. The section of the meadow survey that deals with Eaglesfield Park is included in this plan as Appendix IV.

The grass in Lower Eaglesfield Park is cut infrequently in accordance to a maintenance schedule that was created according to the aforementioned Greenwich meadow survey 2005. This field is of importance as it lies wet encouraging a greater bio-diversity and as such, is designated as a site of Nature Conservation Importance (SNCI) by the Greenwich Council UDP (see Appendix 1). An abundance of frogs can be found here in the spring. There is a path cut in the grass for dog walkers to encourage them to use this part of the park away from the more formal areas in the top area (which are more regularly used by children to play).

Horticultural Description

There are many mature trees and semi-mature trees both on the perimeter and scattered around the site providing excellent amenity value.

The majority of shrubs within the park are located in the area that was formerly part of (and still known as) 'The Shrubbery'. The rest of the park has a variety of trees, including ash, lime and oaks. The perimeter of the formal park area where it borders the road has a line of London Plane trees. This line of trees has been broken in several sections where trees have been removed.

Arboricultural Survey

To date there has been no Arboricultural Survey within Eaglesfield Park. This will be addressed later in this plan.

Tree management of the site will: -

Comply with the overall management plan for Eaglesfield Park

Undertake the work identified within the Tree Survey

To preserve and enhance the existing landscape by replacing a tree when removed and reviewing the capacity for additional planting.

There are over 50 mature and semi-mature trees on the site, with none exceeding 20 metres in height.

An Arboricultural Survey will contain a complete list of all the trees within the site and set out actions required to maintain the trees in a safe and healthy condition.

Current Management Arrangements

Management Structure

The management of the park described in this management plan is the responsibility of the Parks & Open Spaces Department within Greenwich Council.

The Parks and Open Spaces Department is located within the Directorate of Culture and Community Services. The Parks and Open Spaces Operations manager is accountable for the overall management responsibility of the Service.

Individual management functions are devolved and key functions are identified as follows:

- Horticultural Maintenance
- Park Keepers, Rangers and Parks Security
- Parks Development
- Fixed Equipment Playgrounds
- Ecology & conservation
- Tree & Woodland maintenance
- Administration – Sports lettings, complaints monitoring

Staff Presence

A mobile team visit the park on a regular but unscheduled basis. These Park Keepers visit the park to perform a range of duties: - to ensure the safety of the public visiting the park, provide assistance where appropriate, daily visual inspection of playgrounds, opening and closing of gates

& facilities, maintain the park free of litter and the collection of passes and income from sports where appropriate.

Grounds maintenance is provided by the Council's own workforce. The District Manager responsible for the grounds maintenance staff initially inspects standards.

A further check is carried out by Quality Control Officers, who are centrally based staff, reporting to the Assistant Technical Manager. Senior management also carry out random checks.

See Appendix III for the Parks and Open Spaces Management structure described above.

Grounds maintenance specification

In brief, the formal park area is maintained as amenity grass and the SNCI area is left as meadowland, with the pathways being cut regularly.

Budget Information

The budgets used to maintain parks and open spaces are currently split into two areas, Horticulture Operations and Property Services.

Horticulture operations

Currently it is not possible to identify expenditure specifically related to Eaglesfield Park, as finances generally come from a central fund, and as yet, there has been no move to create a system to easily identify where the money is spent, as significant resources would have to be redirected in order to resolve this issue.

Property Services

The corporate budgets for both planned and responsive maintenance of the Council's property infrastructure are held by Greenwich Property Services in the Directorate of Strategic Planning. Planned works are carried out on a strict basis of corporate priorities and, as a consequence, P&OS has to compete against other service departments for a share of the limited funds available. Responsive repairs are carried out for minor items as and when they arise.

Community Information

The information relates to the Shooters Hill Ward as a whole and not specifically to Eaglesfield Park's immediate surroundings, which border onto the Eltham South Ward on the northern side of the train line.

The resident population of Shooters Hill Ward, as measured in the 2001 Census, was 12854 of which 48 per cent were male and 52 per cent were female. The resident population of Greenwich was 214,403, of which 48 per cent were male and 52 per cent were female.

The 2001 Census indicated that the majority of people living in this Ward were white. People in the 30 – 59 years age bracket represented the largest proportion of the Ward's population, the average age being 36.6 years. 21.4% of the Ward's population were under the age of 16 years old.

The level of employment was slightly above the Greenwich average, but nearly equal to the national average. 23.0% of the households in this Ward have 2 or more cars or vans, and 31.4% of the population have no access to a car or van.

Community Consultation

There is a newly established Friends of Eaglesfield Park group that operates under a model constitution. Copies of their constitution are available by contacting the Chair of the Friends Group via the contact details given in this document.

Eaglesfield Neighbourhood Watch Scheme was launched in January 2006. See the section on anti-social behaviour later in this document for more details.

This document will form the basis for public consultation and involvement in the future development and management of the park. Officers will organise a series of meetings with the local community, stakeholders and ward members to present and review the management plan.

Draft List of Stakeholders

Greenwich Council

Directorate of Culture & Community Services
Parks & Open Spaces
Shrewsbury House Community Centre

Directorate of Strategic Planning
Property Services
Planning Control
Green Chain Officer

Chief Executive's Department
Marketing/events

Directorate of Neighbourhood Services
Neighbourhood panels/Representatives

Directorate of Children's Services
CYPS
Local schools

Agencies
Police
Safer Neighbourhood Team
Fire & Rescue Service
Green Chain Walk

Community

Friends of Eaglesfield Park
Eaglesfield Park Neighbourhood Watch Scheme
Park Users
Park non-users
Dog walkers

Green Chain Walkers

Politicians

Ward members (Shooters Hill Ward).

Local MP

Existing and potential conflicts of interest

- Potential conflicts that are generally found in parks include: -
- Tension between some young people and local residents
- Neighbouring properties may be affected by noise as a result of activities in a park and associated litter.
- Dogs not under proper control and dog fouling
- Vandalism deterring legitimate park users.
- Fear of crime
- Lack of improvements due to budget constraints
- Older children monopolising and/or damaging play equipment.
- Illicit motorcycling/quad biking

Recreational evaluation

Possible recreational activities of Park Users are both passive and active. Passive recreation includes walking, sitting, reading and casual sport. Active recreation in the park is limited to the Playground and casual sport.

Summary

Eaglesfield Park is a medium sized site incorporating a range of passive and recreational activities. It is used by many of the children and adults of the local area. The availability of the grassed area is an asset and promotes small scale informal recreation.

PART II: WHERE DO WE WANT TO GET TO

VISION FOR THE PARK

To manage, develop and maintain Eaglesfield Park to a high level of quality and to a sustainable standard in partnership with and meeting the needs of the local community.

To improve the health and wellbeing of visitors and residents by developing a well-maintained and quality park for active recreation and or relaxation with respect to the size, geographical environment, historical landscape and nature of current amenities, e.g. the children's play area

General Objectives (DRAFT)

To manage the maintenance and development of Eaglesfield Park to a high level of quality and a sustainable standard, in partnership with and meeting the needs of the local community

To preserve and enhance the biological environment within the park with a view to improving the ecology of the park

To preserve and enhance the infrastructure within the park with a view to support the primary uses of the park

To realise the potential of the park as an ecological, cultural and historical place to visit through a programme of publicity, information, education and events.

To reduce anti-social behaviour in the park in co-operation with other stakeholder agencies, e.g., by taking advantage of the Green Space Strategy Action Plan items under Community Safety

To work with the local community in identifying priorities for funding of the park and to consult with them and others in management planning, including monitoring and review

To work with the local community in identifying appropriate projects that could be completed by them (the community) but are otherwise beyond the resources of the council, and assisting them (The community) in identifying and applying for appropriate funding.

ANALYSIS & ASSESSMENT

Heritage

Eaglesfield Park has been developed as a park for just over one hundred years, and the 'invisible' heritage at the site may be of value to residents who may have memories of playing in the park as children. It may be possible to access this invisible heritage by the use of interpretation boards showing historic photos of the park.

Ecology/Biodiversity

The UDP says "... Plans need to be based on adequate information about species and habitats... To achieve these goals, baseline data needs to be established where ecologically friendly management is already in place. Therefore, ecological assessments must be undertaken in order to establish baseline data..." The Greenwich Meadows Survey 2005 provides an excellent starting point from which further studies can be performed, but it should not be viewed as being definitive, as all ecologies change over time, and require regular surveys in order to establish trends and conditions within the ecology.

The ecology of the park could also be improved by restoring the pond. The Friends of Eaglesfield Park are currently working on a project to restore the pond.

The ecology within the park could be promoted by the use of interpretation boards showing the species that are present within the park.

Landscape and Trees

The landscape within the park is a landmark and can be seen from a wide area around. Any development on the park should remain very sensitive to this.

As there is not currently an Arboricultural report for this park, it is recommended that one be undertaken.

The perimeter line of London Planes in the formal park is broken where trees have been removed. In some areas, it may be appropriate to reinstate them. In addition, this line of trees passes around where the outer border of 'the shrubbery' was.

On casual inspection, the mulberry tree within the former Shrubby grounds appears to only be around 80 years old, but it is possible that it may be historically important, as there are other mulberries in the area that are of the King James provenance. It may be advantageous to have a qualified arborist assess the tree's age.

Furniture and Fencing

The fencing at the southern end of the formal park is hidden from view by shrubs and trees, thus creating a haven for antisocial behaviour.

The park furniture found at the summit of the park, adjacent to the playground also appears to be a focus for antisocial behaviour.

The fencing around the Lily Pond is also subject to destructive vandalism and would benefit from repairs/replacement.

The park boundary fence in this area is addressed elsewhere in this document.

Management

Management of the park apparently satisfies the wider users of the site.

As mentioned, there is currently no specific budget for arboricultural assessments, but this will be carried out by the Greenwich Council Tree crew as part of their ongoing works program.

The existing grounds maintenance specifications have been modified from past contracts, reflecting good horticultural practice, safety and landscape management.

Staff Presence

As noted previously, staff visit the park once a day to carry out routine inspection and maintenance duties on a regular basis (times vary)

Greenwich Council at the time of writing does not have the resources to allocate a keeper to Eaglesfield Park on a Full Time Basis.

Litter

It has been noted that the park is subject to a high level of littering, but this is not on a continuous basis. In the past, the general public have felt compelled to notify Parks and Open Spaces of the condition of the park and at times, collect and dispose of the litter themselves.

It would seem that at times, additional litter picks may be necessary, particularly when groups of youths have congregated in the park during the evening.

Dogs in parks

Greenwich Council's current policy is that all playgrounds are dog free areas, but in fact there is no legislative basis for this policy and hence, this policy is not enforceable.

Dog fouling has also been recognised as being a problem within many of Greenwich's open spaces, and is also not enforceable.

The Safer Neighbourhoods Act 2005 makes it possible for local authorities to introduce Dog Control Orders. Greenwich is currently investigating introducing control orders to affect all of its open spaces with regard to the following categories

Dog Fouling

Maximum number of dogs on a leash at one time

Dog exclusion zones/on leash areas.

Visitor & Community Needs

Currently there has been no assessment of park visitor and community needs. Community consultation should be undertaken to identify the needs of the community, the results of which should be incorporated into this management plan.

A consultation strategy for this site will be developed in the future.

As mentioned previously, there have been problems with antisocial behaviour within the park. Vandalism is repeatedly associated with the area behind the Lily Pond, and the area immediately adjacent to the playground containing picnic tables is often the site of a gathering of people who litter heavily and deface the furniture (amongst other activities).

Anti Social Behaviour (ASB)

Eaglesfield Park has a Neighbourhood Watch scheme operating. Their contact details are;
Eaglesfield Park Neighbourhood Watch Scheme (EPNWS)
Jenny Penn (Principal Co-ordinator)
Tel 0208 854 3337 (evenings)

Further information about the group and a copy of their aims can be obtained by contacting the co-ordinator.

Representatives from the Eaglesfield Park Neighbourhood Watch Scheme have reported that the following ASB occurs at the site –

- intimidation by sheer numbers within gangs
- shouting and swearing
- smoking and drinking (in the majority by underage youth)
- rubbish, broken bottles, cigarette packets, condoms
- tagging/graffiti
- blocking footpaths and roadways
- throwing bottles and eggs to people and passing cars
- misuse of fireworks
- destruction of public property (Neighbourhood Watch signs)
- destruction/stealing of private property (building materials to build camp)

Other ASB includes:

- driving of motor bikes on the public footpaths and park land
- abandoning of and subsequent burning out of cars on park land and surrounding area
- Drug related incidents/crimes

The junction of Cleanthus and Foxcroft roads seems to be particularly prone to ASB activities.

This document is not intended to be an ASB reduction strategy, but further investigation and effort should be made to link this document with a crime and disorder reduction strategy for this area.

A report by PC Whitbread was undertaken in February 2006 this has been reviewed by officers of the council. Specific proposed measures to tackle ASB at this site are listed in the action plan. A copy of the report can be obtained by contacting the EPNWS co-ordinator.

Consultation

Results of consultation to be detailed here once completed.

DRAFT

STRENGTHS

- Major viewpoint park
- Active Friends group/Neighbourhood Watch (with an interest in the park)
- Good local park enjoyed by the local community
- New signage has been installed as part of Green Chain
- Well maintained park
- The Friends of group are working on a restoration project for the pond

CHALLENGES

- Vandalism/ASB within the site –and in particular graffiti and vandalism, both usually on the man-made surfaces.
- Specific sections of the park may be intimidating at night and may contribute to ASB or feelings of vulnerability
- No survey of the SINC area
- No Arboricultural Survey
- There is limited marketing of the site

RECOMMENDATIONS

- Enable the Friends of group and the EPNWS to have an opportunity to comment on the plan and review recommendations as appropriate
- Undertake consultation with stakeholders to identify priorities for improvement to be fed into the Management Plan
- To continue the development of an effective working partnership between the Parks and Open Spaces Department and the Friends of Eaglesfield Park/ local community, and in their involvement in the management planning consultation process
- Undertake an Arboricultural Survey within the park
- To identify (through a process of consultation) whether additional signage – for example, a ‘view interpretation panel’ would be beneficial/desirable
- Maintain view through sensitive tree management and planting
- Perform a Biological /Bio-diversity survey of the SINC area on a regular basis in order to establish trends within the ecology
- To support the Friends of group in their efforts/aspiration to restore the pond
- To review the Maintenance Schedule for Eaglesfield Park and incorporate details into this management plan
- To improve awareness, use of and respect for the site by all sections of the community
- To reduce ASB at the site through a range of measures (see Action Plan)
- To Review, update, cost and include the Annual Maintenance Model in this plan

PART III: HOW WILL WE GET THERE

ACTION PLAN

Timescales as given in this document are as following;

- Short Term – Within one year from adoption of this plan
- Medium Term – Within three years from the adoption of this plan
- Long Term – Five years and more from the adoption of this plan

Green Space Strategy Action Plan section	Recommendation	Action	Timescale (Long/Medium/Short Term)	Responsibility
Performance and Standards, Inward Investment	Enable the Friends of Eaglesfield Park and EPNWS to have an opportunity to review/comment on these recommendations as appropriate	Contact Friends of Group and Share draft plan. Incorporate comments/amendments as appropriate	Short Term	
Performance	Undertake consultation to identify community needs/priorities for improvement (to include issues around ASB)	Conduct user surveys/issue questionnaires to all stakeholders	Short Term	
Performance and Standards	Undertake an Arboricultural Survey within the park (to include an assessment of the Mulberry Tree	Arrange for tree officer to include in work schedule	Short Term	

Eglesfield Park Management Plan 2008

Biodiversity	Assessment of line of London Planes)	Identify funding and source the knowledge to undertake regular surveys	Ongoing	Parks and Open Spaces/ Friends of Eaglesfield Park
Culture and Events	To undertake regular Biological/Bio-diversity surveys of the Lower Park area and the pond, when restored.	To include this in part of consultation process with local community		
Community Safety	To identify (through a process of consultation) where additional signage – for example, a ‘view interpretation panel’ would be beneficial/desirable	Contact/oversee Youth Services/detached team within the Children’s directorate to facilitate youth intervention in the park and engage young people in more positive activities	Ongoing	
	To reduce ASB at the site	Promote the Council’s 24 hour ASB hotline within the community. For example; incorporate into community notice board		
		Undertake consultation with Community to explore the issues of graffiti removal (Exploration of anti-graffiti paint and/or working with community to train them in graffiti		

		<p>removal</p> <p>Work with NHW/appt agencies to see if they are able to record/analyse crime at this site over a specified period (perhaps on a monthly basis in one full year)</p> <p>Identify whether the police/other agencies have a local crime and disorder reduction strategy to link in with this plan</p> <p>Explore issues of crime with wider community through questionnaires and park user surveys</p> <p>Request that Shooters Hill Safer Neighbourhood Team patrol the park and its immediate area more often and work in conjunction with them as appropriate (Use trends obtained from ASB database to reinforce this request)</p>		
<p>Biodiversity</p>	<p>To support the Friends of group in their efforts/aspiration to restore the pond</p>	<p>To assist the friends of group where appropriate in trying to secure funds to restore the pond</p> <p>If funds are identified and the</p>		

		restoration takes place, to approach an appropriate group or agency to assist in the development of a maintenance plan for the pond for incorporation into this plan).		
Performance and Standards	To review the existing Maintenance Schedule	To review the existing maintenance schedule through consultation with community		
Education and Culture	To improve awareness/use of site by all sections of the community	<p>Undertake consultation to identify any barriers to use for any particular groups/users</p> <p>Undertake to produce a marketing plan for the park in conjunction with the community</p> <p>Explore the possibility of organised visits or community events in conjunction with the community</p>		

PART IV: HOW WILL WE KNOW WHEN WE'VE ARRIVED

MONITORING AND REVIEW

The Eaglesfield Park Management Plan will be fully reviewed and updated (where appropriate) every five years and the action plan reviewed annually by Parks Management Staff responsible for Eaglesfield Park.

There will also be a need to keep a working document copy of the Management Plan within the parks office so that issues and changes that arise as well as new information can be documented, and the action plan can be regularly reviewed and completed works documented within it as part of the Parks Service business planning process.

Upon review, the new management plan will make note of the works performed and review the success of those works.

APPENDIX I: Legislation, policies and strategies affecting park management

As highlighted earlier in the plan, Greenwich Council's Parks & Open Spaces department operates within a wide framework of national, regional and local policy statements and strategies. The main documents impacting on the development of this plan are listed below.

The Greenwich Strategy

The Greenwich Strategy sets out the vision for Greenwich Borough as being the place to live, work, learn and visit. This vision underpins all of the strategies produced by Greenwich Council and directly impacts on all service plans and service delivery.

The Cultural Strategy

Parks & Open Spaces is one of six 'areas' considered by the Cultural Strategy. The Strategy has five over-arching themes: - Equality and Access, Sustainability, the Cultural Economy, Achievement and Excellence and Partnerships. All of these aims are relevant to this management plan and have been considered in developing the opportunities and priorities for this site. The plan also has a number of strategic aims.

Green Space Strategy

The Green Spaces Strategy sets out the Council's strategic intentions for its green assets and its vision of the positive contribution that Greenwich's open networks make to our lives.

The thematic objectives (community safety, biodiversity, education and culture, culture & events, tackling inequality, sport, health & well being) are all relevant to the management plan for Eaglesfield Park.

Parks & Open Spaces Service Plan 2006-7

The Parks & Open Spaces department aims to develop, manage, ensure accessibility and maintain to a high standard the borough's Parks, Open Spaces, Woodlands, Tree Stock, Cemeteries, Playgrounds, Sports Pitches, Allotments and other outdoor facilities. To meet the needs of the community and deliver the Council's core objectives where applicable to the service, and specifically regarding the provision of a clean and well cared for environment and supporting Health and Quality of Life for the local community.

ISO 9002:2000 – Quality Management System

Quality Management System ISO 9001: 200 is used by organisations to manage their activities and resources to guarantee a quality service. This management system is based on eight quality management principles:

- Customer Focus
- Leadership
- Involving People
- Process Approach
- System Approach to management

- Continual Improvement
- Factual Approach to decision making
- Supplier relationship, which benefit both sides.

The Parks & Open Spaces department is currently ISO 9002 accredited.

Unitary Development Plan

Local Councils have a duty to prepare a Development Plan by law. The Greenwich Unitary Development Plan (UDP) sets out the vision for use of the land in the Borough, and provides the main guidance for making decisions on individual planning proposals. The document is intended to cover the period 2001 – 2011 (or 2016 in some instances) it is a legal document with the following purposes

To provide a framework of acceptable uses within the Borough, defining areas where development is not desired or where it needs to be carefully directed and;
To provide a detailed basis for the control of development

Eaglesfield Park is designated by the UDP as follows

- Metropolitan Open Land (MOL)
- Green Chain
- Green Chain Walk
- Conservation (SNCI)
- Area of Special Character of Metropolitan Importance

The UDP may be viewed at the Directorate of Strategic Planning, Planning Department, Peggy Middleton House, Woolwich, SE18, or alternatively at a local library.

Metropolitan Open Land

The UDP designates Eaglesfield Park as Metropolitan Open Land (MOL). Policy references O1, O2, O3 and O4 under the section 'Protecting Open Land' set out what the acceptable land uses and allowable developments are within areas designated as MOL. These policy references are too lengthy to reproduce here. The policies are broadly meant to control development or alterations to existing land that would be inappropriate to MOL and have an adverse affect on the character and usage of the open space.

Green Chain

The UDP also designates Eaglesfield Park as Green Chain. Policy reference O5 under the section 'Protecting Open Land' sets out what the objectives of this designation are. The objectives are as follows

To improve and encourage the provision of suitable recreational facilities, with an emphasis on those serving a wide area of South East London and/or requiring open land.

To safeguard the open land from built development and maintain its positive contribution in providing a visual and physical break in the built-up area of London.

To conserve and enhance the visual amenity and ecological aspects of the landscape.

To improve public access to and through the area.

To promote an overall identity for the area in order to increase public awareness of available recreational facilities.

To encourage the collaboration and co-operation of the various public and private agencies, owners, organisations, clubs, etc. in the area to achieve the above objectives.

For the extent of the Green Chain Area, refer to the UDP proposals map and second draft alterations maps.

Community Benefits

O10 The Council will seek to secure improvement and enhancement of existing parks and public open spaces, where major development places increased demand on existing areas, and, where appropriate, the creation of new parks and public open spaces in line with Policies O9 and C3, through planning obligations and conditions on planning permissions in line with Policy SC2.

Park Facilities

O12 The Council will seek to enhance open space by the provision and encouragement of appropriate park facilities (e.g. seating, children's play equipment, refreshment facilities, outdoor tennis courts, pitch and putt, sports pitches and changing facilities and Arts, Culture and Entertainment facilities, such as open air performance spaces, sculpture and visual imagery and areas for cultural exhibition and study) within suitable parks and public open spaces. Facilities should be of a high standard of design and quality and respect local nature conservation interests. Such facilities should be safe to use and accessible to all. (See Policies D5, D6 and D7).

Green Chain Walk

Policy O14 refers to the Green Chain Walk, which runs through Eaglesfield Park on Cleanthus and Foxcroft Roads.

O15 Existing footpaths will be safeguarded and new footpaths created to and through open spaces and places of interest, where they do not adversely affect nature conservation. The Council will endeavour to create a signposted network of continuous and circular routes. In particular the 'Green Chain Walk' footpath network will be improved and extended and new links created wherever possible.

The UDP then says that the Mayor's Transport strategy has identified the Green Chain Walk as being one of six strategic walks in London Section 2.4

Conservation

The UDP identifies the eastern side of Eaglesfield Park as being part of a Site of Nature Conservation Importance (SNCI), listed in the UDP as a Site of Borough Importance Grade I and designated as SNCI NCI6. reasons given for this designation are as follows: -

'An extensive mosaic of habitats, ranging from ancient woodland, secondary woodland through scrub to rough grassland and wetland.'

The UDP refers to SNCI's as following: -

O18 A network of Sites of Nature Conservation Importance (SNCI) throughout the Borough has been identified for protection. These include Sites of Special Scientific Interest (SSSI) and sites declared as Local Nature Reserves (LNR). They are defined on the Proposals Map and listed in Table O2 as sites of Metropolitan, Borough or Local importance for nature conservation or geology. There will be a presumption against the development of these sites: the level of

protection accorded to a site will be commensurate with its designation. Conservation and enhancement of important scientific features will be sought by appropriate management.

In addition, It says: -

Plans need to be based on adequate information about species and habitats... To achieve these goals, baseline data needs to be established where ecologically friendly management is already in place. Therefore, Ecological assessments must be undertaken in order to establish baseline data.

For the extent of the SNCI Areas, refer to the UDP maps (2006 adopted version).

Areas of Special Character

Also, the Greenwich UDP in part 2.6 refers to Eaglesfield Park as part of a larger area designated as Special Character of Metropolitan Character.

D28 Within Areas of Special Character defined on the Proposals Map, special consideration will be given to the safeguarding, restoration and enhancement of character, scale and quality of open spaces and associated buildings. Skylines and distant views both to and from the Areas of Special Character will be protected.

Draft Biodiversity Action plan

The Greenwich Biodiversity Action Plan will be the first co-ordinated approach to conserving Greenwich's biodiversity. The aim of the plan is:

'To ensure the conservation, enhancement and public appreciation of the biodiversity of the London Borough of Greenwich'.

The Biodiversity Action Plan focuses on locally important habitats and species and has actions drafted to ensure that they cover all relevant habitats and species. Initially actions may be focussed on those under the most pressure or where most advantage can be gained. However, it allows for all important habitats and species to be covered.

The Biodiversity Action Plan has been developed in partnership with local and regional groups and organisations and is currently in a draft stage. Once the final draft is agreed it will be released for wider consultation before a final plan is adopted.

Legislation

The Parks & Open Spaces department operates within the frameworks set out by the following legislation, and therefore, the legislation may impact upon the delivery of service of the Parks and Open Spaces department both financially, through planning and human resources. This is not a comprehensive list but is indicative of key pieces of legislation relating to P&OS.

Alcohol Consumption in Public Places Order 2003

Clean Neighbourhoods Act 2004

Control of Pesticide Protection Act 1986

Country Code 1981

Country side and Rights of Way Act 2000 and increments

Countryside & Right of Way Act 2000

Disability Discrimination Act 1998
Health & Safety at Work Act 1998
Litter Act 1983
Ministry of Housing and Local Government Provisional Order Confirmation
(Greater London Parks & Open Spaces Act)1967
Occupiers Liability Act 1957
Road Traffic Act 1988 (as amended 1991)
The 2004 Country Code
The Anti Social Behaviour Act 2003
The Dangerous Dogs Act 1991 & Dogs Act 1871??
The National Parks & Access to the Countryside Act 1949
The Weeds Act 1959
The Wildlife & Countryside Act 1981

In addition there are numerous bye-laws that relate to specific parks.

APPENDIX II. Brief History of the park

Eaglesfield Park occupies the highest point of Shooters Hill, the second highest point in the greater London area. As such, it has been a landmark since the earliest human settlements in the London area. Prior to human settlement, the area occupied by the park would have been largely covered by woodland, the only local remnants of which now are in Shrewsbury Park and Oxleas Wood.

The geology underlying the cap of Shooters Hill as mentioned previously in this plan consists of a gravel cap on top of London Clay. The effects of this are to produce a number of natural springs around the cap of the hill. Some historians indicate that the Romans and earlier peoples may have come to “take the water” from these springs. The Romans also created the road that runs over the top of Shooters Hill just south of Eaglesfield Park.

Clearing of individual areas of woodland in this area would have taken place from the very early Anglo-Saxon times, if not before. The name for the nearby Oxleas Woods comes from the Anglo-Saxon practice of clearing open areas (or leahs) in woodlands for grazing lands for sheep and oxen – hence – ox leah.

The modern name for Eaglesfield is derived coat of arms of John Lidgbird, who was made Sheriff of Kent in 1741 and owned the site. of arms displayed two eagles, as shown here.

Eaglesfield Park has historically been referred Eaglesfield Pleasure Ground and Eaglesfield Recreation Ground.

The site was originally acquired by the County Council in 1908, and then transferred Greenwich Council upon dissolution of the London Council in 1985.

There were two ponds within the grounds of one on the very top of the hill, referred to as Pond. The area surrounding this pond was in the grounds of ‘the Shrubbery’. This pond referred to in A.H.Bagnold’s “Shooters Hill” “Tile Clay-Pit”.

The other pond was further down the ridge and was thought to be a “dew pond”. This pond was often used as a children’s paddling model boat sailing area, and is shown on the this plan as the ‘yacht pond’. The Yacht Pond converted to the children’s playground.

Historically, the park had toilets, shelter, kiosk, and staff accommodation; however, all these facilities have been removed.



from the High His coat

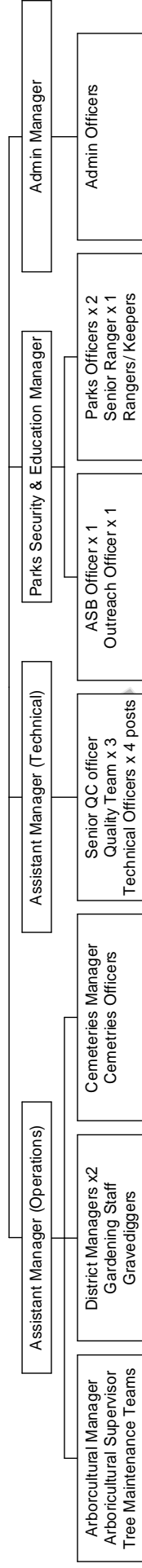
to as

London to the Greater

the park, the Lily formerly is as the

of the hill, second pool/ cover of has been

APPENDIX III: Parks and Open Spaces Management Structure



APPENDIX IV: Meadow Survey

The following is an extract from the Greenwich Meadow Survey 2005 by Groundwork.

2.4 Eaglesfield Park

Brief Description

This site comprises a small area (approx ½Ha) of rough meadow with a hedge and scattered trees on the eastern boundary. The meadow comprises predominately of rough grass species with areas of more sparse vegetation. The topography of the site is relatively flat with a gentle downward slope towards the east.

Recommendations

The limited diversity and small numbers of meadow flowers suggest that this site would benefit from being left unmown. This would provide rough grass and scrub habitat, which is valuable for invertebrates, small mammals and nesting birds. Management of the area could be confined to occasional strimming of the areas of grass in the autumn and removal of scrub every 2 – 3 years.



Photo 6. Looking south across the rough meadow and scattered scrub

Species record:

Common name

White Clover

Red Clover

Common Cat's-ear

Creeping Buttercup

Smooth Tare

Hairy Tare

Pignut

Common Chickweed

Common Mouse-ear

Perennial Ryegrass

Creeping Bent

Yorkshire Fog

Red Fescue

False Oat Grass

Cock's foot

Latin Name

Trifolium repans

Trifolium repans

Hypochoeris radicata

Ranunculus acris

Vicia tetrasperma

Vicia hirsuta

Conopodium majus

Stellaria media

Cerastium holosteoides

Lolium perenne

Agrostis stolonifera

Holcus lanatus

Festuca rubra

Arrhenatherum elatius

Dactylis glomerata

