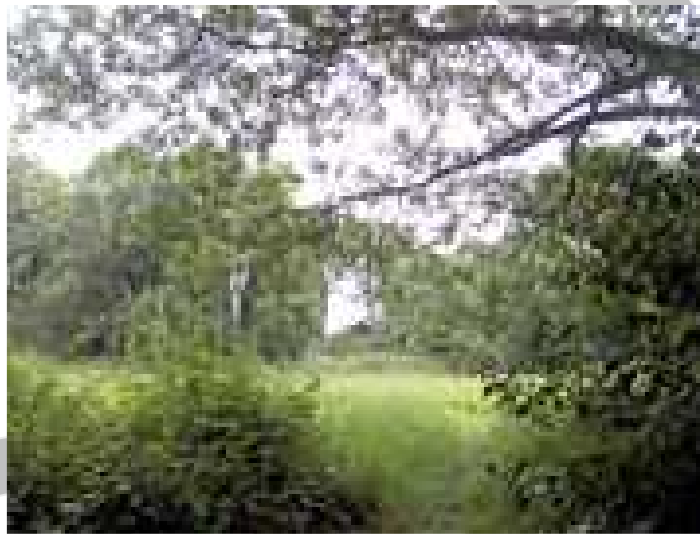


# The Bostall Heath and Bostall Woods Management Plan 2008



Source: [www.parkexplorer.org.uk](http://www.parkexplorer.org.uk)

<b>PART I: WHERE WE ARE NOW .....</b>	<b>3</b>
<i>INTRODUCTION:</i> .....	3
What is a park management plan? .....	3
Purpose of this Management Plan.....	4
Wider Policy Context.....	4
<i>SITE DESCRIPTION AND INFORMATION BASE</i> .....	5
Brief Site Description .....	5
History and Heritage .....	6
Flora and Habitat Types.....	6
Fauna .....	9
Infrastructure.....	11
Main facilities .....	11
Access .....	12
Park User Information.....	13
Management.....	14
<b>PART II: WHERE DO WE WANT TO GET TO:.....</b>	<b>16</b>
<i>VISION</i> .....	16
General Objectives (draft).....	16
<i>ANALYSIS &amp; ASSESSMENT</i> .....	17
Heritage .....	17
Ecology.....	17
Sport and Recreation.....	17
Visitor & Community Needs .....	17
Summary of known issues or challenges.....	18
Consultation .....	18
<i>STRENGTHS</i> .....	19
<i>CHALLENGES</i> .....	19
<i>RECOMMENDATIONS</i> .....	19
<b>Part III: HOW WILL WE GET THERE .....</b>	<b>20</b>
<i>ACTION PLAN</i> .....	20
<b>PART IV: HOW WILL WE KNOW WHEN WE’VE ARRIVED .....</b>	<b>23</b>
<i>MONITORING &amp; REVIEW</i> .....	23
<b>APPENDIX I: Legislation, policies and strategies affecting park management.....</b>	<b>24</b>
<b>APPENDIX II: Site Heritage and History.....</b>	<b>28</b>
<b>APPENDIX III: REFERENCES .....</b>	<b>30</b>
<b>APPENDIX V: PARKS AND OPEN SPACES MANAGEMENT STRUCTURE .....</b>	<b>31</b>

## **PART I: WHERE WE ARE NOW**

### *INTRODUCTION:*

#### **What is a park management plan?**

Management Plans are an important aid to the efficient and effective management of a site. A Plan forms part of a process for evaluating performance, consulting and involving people, strategic planning and providing continuity. Individual plans will be specific to each park and will deliver aims and objectives specific to the needs of the local community who will be directly involved in its formulation.

A Park Management Plan also provides an excellent opportunity to collate a wealth of information relating to the park that the management authority possesses, into a single comprehensive document.

If you require any further details about this plan please contact:

Address: Parks & Open Spaces:  
Shooters Hill depot  
Opposite Eaglesfield Rd  
Woolwich  
SE18 4LX

Tel. 020 8856 0100

Email [parks@greenwich.gov.uk](mailto:parks@greenwich.gov.uk)

This park is allocated a technical officer who can be contacted for any further information (using the contact details provided above).

**Would Friends of like contact details here?**

Writing Timescale:	TBA
Approved:	TBA
Adopted:	TBA
Due for Revision:	TBA

### **Purpose of this Management Plan**

This plan builds on the earlier management plans by Parks & Open Spaces and the London Ecology Unit.

As well as developing a Green Space Strategy, the production of individual management plans for each park is good practice and was one of the Action Points arising from the Green Space Strategy.

The new management plan will provide a vital resource for parks staff in maintaining and developing Bostall Heath and Woods as a resource for the community and visitors to the area and as such will be under constant informal review, with an annual review of progress (of the Action Plan) and a 5 year comprehensive review in 2012.

It is intended that this plan will help to encourage relationships between the Council and the community and provide access to information on the management approach to this site.

In addition, it is envisaged that the plan will provide a framework around which any future decisions concerning this site will be taken and that it will assist with allocating existing and securing additional resources for developments on this site that this management plan specifies.

Future actions and priorities for this site are identified in the Action Plan to this document. This management plan therefore provides a benchmark against which future progress can be measured.

### **Wider Policy Context**

The Management Plan has been written within the context of a wide framework of national, regional and local policy statements and strategies.

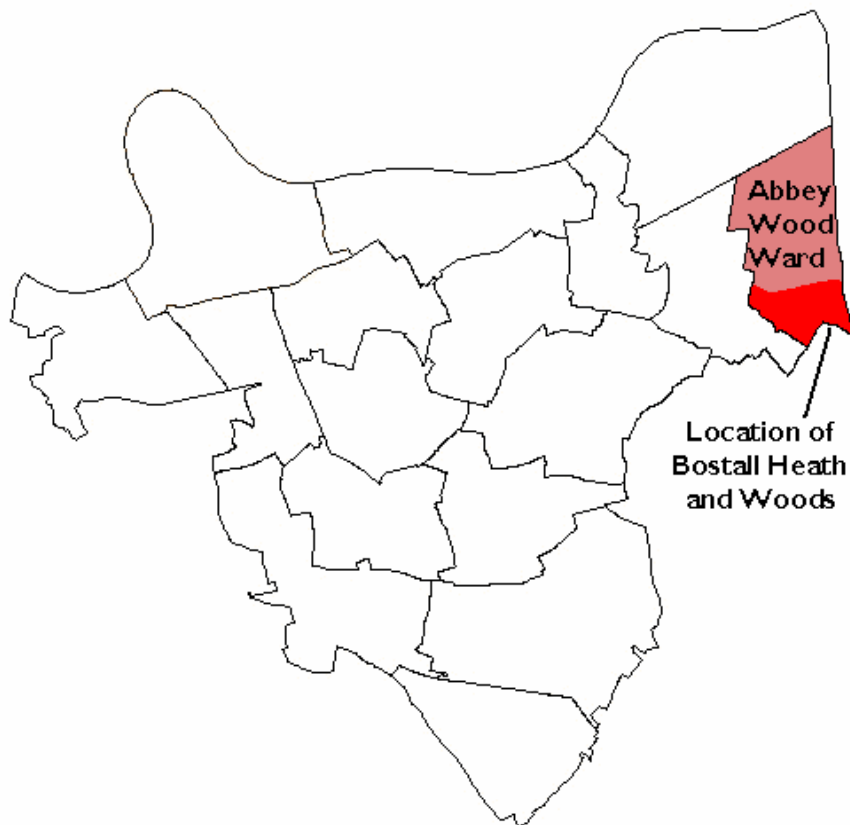
A number of strategies have been considered in the production of this document to ensure that the priorities identified in this plan deliver and compliment the appropriate aims and objectives identified in them.

The main documents impacting on the development of this plan are listed in Appendix I.

## *SITE DESCRIPTION AND INFORMATION BASE*

### **Brief Site Description**

Bostall Heath and Woods is a large mixture of woodland with areas of grassland located in the Abbey Wood Ward of the London Borough of Greenwich.

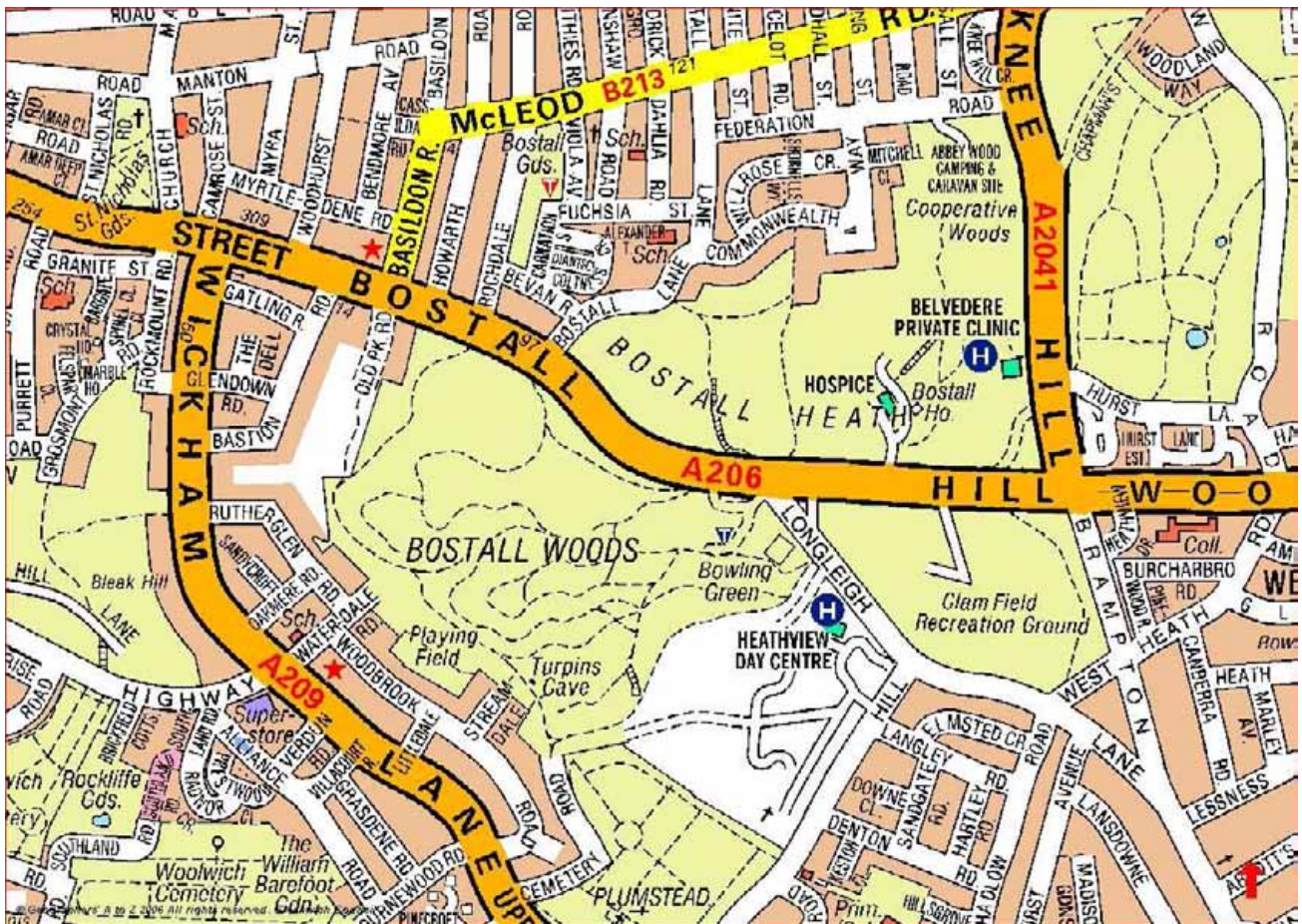


The Heath and Woods are located at grid reference TQ 467 780 and occupy an area of 159.1 hectares, making it one of the largest green spaces in the borough.

It is of importance to the borough for both its ecology - being a blend of woodland and acid grassland containing remnant heather - and its heritage.

Bowling, casual cricket and football facilities along with lots of open space and walking tracks, and being part of the Green Chain Walk network, make Bostall Heath and Woods well used for informal recreation and activities.

Bostall Heath and Woods lies on the Blackheath, Woolwich Beds and Thanet Sands which runs east-west across the borough.



The Heath and Woods are owned and maintained by Greenwich Council. The Cooperative Society owns the Cooperative Woods towards the North East of the site.

These areas are categorised as Natural/Semi-natural space in the Green Space Strategy.

### **History and Heritage**

A summary of the site history and heritage is detailed in Appendix II.

### **Flora and Habitat Types**

The dominant habitat type at Bostall Heath and Woods is woodland although there are also areas of grassland and relict patches of heath.

Ancient (in existence without change since 1600), secondary and plantation woodland types occur in Bostall Heath and Woods. It is worth noting that Nicholson claims that the lack of ancient woodland species and the presence of plantations within the woodland suggest that no ancient woodland remains.

### **Ancient woodland**

The ancient woodland areas are found on the lower slopes to the west and north of the park and within the gullies that cut through the plateau.

Oaks, both pedunculate *Quercus robur* and sessile *Quercus petraea*, are dominant in the canopy with mature sweet chestnut *Castanea sativa* scattered throughout (particularly to the west). Silver birch *Betula pendula* is abundant as a sub-canopy species and holly *Illex aquifolium* provides the commonest understorey shrub in most places. Other tree and shrub species which are found widely throughout the woodland include: field maple *Acer campestre*, elder *Sambucus nigra*, hawthorn *Crataegus monogyna*, rowan *Sorbus aucuparia*, cherry *Frunus avium*, beech *Fagus sylvatica*, blackthorn *Frunus spinosa*, sycamore *Acer pseudoplatanus*, elm *Ulmus procera* and saplings of Swedish whitebeam *Sorbus intermedia*. Hornbeam *Carpinus betulus* is rare. Scots pine *Pinus sylvestris*, presumably planted, is scattered throughout.

Bramble *Rubus fruticosus* and bracken *Pteridium aquilinum* occur in areas where sufficient light penetrates the canopy. The ground flora of the ancient woodland areas is not especially diverse, but this is to be expected in woodlands which overlay the nutrient poor, stony soils of the Blackheath beds. Where the blanket of bramble and bracken enables species such as greater stitchwort *Stellaria holostea*, wood sage *Teucrium scorodonia*, hawkweeds *Hieracium sp.* wood melick *Melica uniflora*, wood meadow-grass *Poa nemoralis*, herb bennet *Geum urbanum* and scattered patches of bluebell *Hyacinthoides non-scripta* carpet the woodland floor.

### **Secondary Woodland**

Secondary woodland occurs towards the top of the slopes and on parts of the plateau. Oak and birch dominate with some of the tree species found in the ancient woodland areas occurring here as well. Aspen *Populus treinula* also occurs. The ground flora in the secondary woodland areas reveals the former heath land nature of much of plateau. It is sparse in places, but elsewhere is dominated by a tufted carpet of wavy hair-grass *Deschampsia flexuosa* and, where shading is not too heavy, gorse, *Ulex europaeus*, bramble and bracken. The secondary woodland, especially in areas fronting roads and built development also supports a variety of exotic species.

### **Plantation**

The beech and scattered conifer plantation at the western end of the plateau was planted at the end of the Second World War. The intense shade from the beech trees prevents much of an understorey or ground flora establishing. Where it does exist, bracken, bramble, rosebay willow herb *Chamaenerion angustifolium*, wood meadow-grass, and herb Robert flourish.

### **Grassland**

Grassland occurs in several open areas within the woodland. These areas are remnants of the much more extensive grassy heath that gave part of this site its name. The grassland still supports a remnant heath land flora.

Most of the glades are dominated by common bent *Agrostis capillaris* with perennial ryegrass *Lolium perenne*, wall barley *Hordeum murinum*, Yorkshire fog *Holcus lanatus*, smaller cat's-tail *Phleum bertolonii* and cocksfoot *Dactylis glomeratus*. In areas which have been subject to some form of disturbance or stress (e.g. trampling, burning, erosion) are found grasses more reminiscent of the former heath, these include wavy-hair grass *Dechampsia flexuosa*, sheep's fescue *Festuca ovina*, early hair-grass *Aira praecox*, and downy oat-grass *Helictotrichon pubescens*. A range of typical nutrient-poor/acid grassland herbs grow amongst the grass sward: cat's ear *Lypochaeris radicata* and sheep's sorrel *Rumex acetosella* are the most abundant, with yarrow *Achillea millefo* [turn, bucks-horn plantain *Plantago coronopus*, ribwort *Plantago lanceolata*, mouse-ear hawkweed *Hieraciurn pilosella* and lesser trefoil *Trzfoliurn dubiurn*, and patches of mosses and lichens. Wood sage occurs in the triangular area of

grassland to the south-east of Clam Field recreation ground. In those parts where the coarser grasses are more dominant species typical of neutral grasslands occur, these include: black knapweed *Centaurea nigra*, common vetch *Vicia sativa*, smooth hawkbeard *Crepis capillaris*, white clover *Trifolium pratense*, ragwort *Senecio jacobaeae* and mugwort *Artemisia vulgaris*. Foxglove *Digitalis purpurea* was noted in a recently burnt patch of grassland/scrub adjacent to Shornells.

### Heather

A few patches of heather can still be found. The 1998 London Ecology Unit reports that these were found in the area known as the Meeting Ground and an additional patch on the large grassy knoll towards the western edge of the site. Several small patches of ling *Calluna vulgaris*, a type of heath shrub, occur at the margin of the glade at the following map reference point: 469 781. This is the only known site for ling in the borough.

Following a success bid to SITA for heath land restoration with contributions from the GLA and Natural England the following sites will have restoration works carried out during autumn and winter 2008, Bostall Heath, Shirley Heath, Mitcham Common, Rowley Green Common, West Wickham and Stanmore Common. This heath land restoration is in response to The Recovery Strategy for London's Heath land, The London Biodiversity Action Plan (BAP), and London's Habitat Action Plan (HAP) for Heath land. These works consist of removal of scrub and scrapes (removal of a tin layer of top soil) followed by the seeding of the scrapes with heather seed. This will appear quite dramatic in places and to the uneducated eye can be seen as destruction of the existing flora and fauna.



Site of Heather

### Trees for Thamesmead

In 2003, a 2.2 hectare site on Brampton Road opposite Pinewood Road was designated a Trees for Thamesmead site. The key objectives for this area were to increase habitat value and long-term health of woodland with thickening and under planting, road screening for noise reduction and pollution control, along with a reduction in mowing costs.

Over 2000 trees were planted according to the following design:

Trees at 2 metre centres in single species groups of 15 to 20 individuals, woodland trees to the centre of compartments, with shrubs and smaller trees towards peripheries. An area of 3 metres width to be left between existing woodland edge and new planting as a pathway/ desire line for walkers and joggers, which may regenerate in part if uncut. All planting will be naturally scalloped on inner boundaries. Woodland to be entirely unfenced to allow free passage through both the new and existing woodland. Under planting areas to be agreed on site with community during planting, to be screened and Tree Mats/Spats placed around trees, but not guarded as unsightly in natural woodland area adjoining the road.

Unfortunately the project was not successful as hoped as the trees suffered from large-scale vandalism. I.

### **Fauna**

No fauna study of this site has been done but the following species have been observed or are likely to occur in the habitats described above<sup>2</sup>:

### **Birds**

Great tit, blue tit, long-tailed tit, gold crest, nuthatch, tree creeper, great spotted woodpecker, green woodpecker, jay, magpie, wood pigeon, blackbird, song thrush, mistle thrush, wren, dunnock and robin are common throughout. Greenfinch and goldfinch are likely to be present in suitable areas along the boundaries of the woodland. Summer visitors such as chiffchaff, blackcap and possibly garden warbler are also present. In winter redwing and fieldfare feed on berry-bearing trees or shrubs, or in the grasslands at the woodland edge. Sparrow hawks and kestrels breed in the woodland; tawny owls are likely to breed. Hobbies, which are seen during the summer months, could also breed here, hunting across the wetland habitats bordering the Thames to the north.

The glades are not extensive enough to provide habitat for birds of open areas; however, species such as whitethroat may occasionally nest in bramble scrub on the edge of the larger glades. As a large complex of open space with a variety of habitats the site is also likely to be an attractive area for passage birds during migration periods. Species such as spotted flycatcher, pied flycatcher and wood warbler may be encountered, particularly during the autumn migration period.

### **Invertebrates**

Ancient woodlands and acid grasslands are habitats which often support rare or uncommon invertebrate species. The woodlands at Bostall are likely to support the typical range of woodland invertebrates; there is a supply (although not plentiful) of standing dead wood and a good number of mature trees both of which are likely to support a rich assemblage of beetles, bugs and spiders.

Although not extensive the acid grasslands are probably large enough (and with enough bare and disturbed ground - an important habitat for some invertebrates) to provide the appropriate conditions for groups such as grasshoppers, crickets, solitary bees, wasps and robber-flies

---

<sup>1</sup> <http://trees.ground-level.org/projects>

<sup>2</sup> Extracted from the Bostall Heath and Woods Management Brief :  
Massini, P, 1989, *Bostall Heath and Woods Management Brief*, London Ecology Unit

### Butterflies

Butterflies are relatively easy to observe and identify and the site would appear to support a range of grassland and woodland butterflies. Apart from the ubiquitous species (e.g. small tortoiseshell, large white, small white, red admiral) the site supports small heath, small copper, meadow brown, common blue and large skipper in the grassland parts of the site; comma and speckled wood at the woodland edge and within sunlit glades; and purple hairstreak in the areas of oak woodland.

### **Mammals**

Populations of the commonest mammals occur in most large woodlands in the London area and this site is no exception. Grey squirrel and fox are present, and wood mouse, hedgehog, common shrew and bank vole are likely to be present. Of the native bat species, Pipistrelle, brown long-eared, and Noctule are likely to occur.

According to the species audit<sup>3</sup> done by the London Biodiversity Partnership, the Pipistrelle bat is a priority for conservation and is culturally valued. The Noctule bat populations have declined in the past and are also a species of conservation concern. The Noctule bat has roost sites in Greenwich but the exact location of their roosts has not been ascertained (although it is thought that many bats roost at the Federation Day Centre site). The brown long-eared bat is rare in London and also a species of conservation concern. This bat is also culturally valued.

In addition weasels are reported from the woodland and there are infrequent records of badger. The occurrence of the latter is likely to be as a result of excursions by young male badgers from known breeding groups in Bromley.

### **Clamfields Recreation Ground**

There are two casual use football pitches on Clamfields Recreation ground. This open grassland area is also used for parking when events are on in the area.



Clamfields

---

<sup>3</sup>[www.lbp.org.uk/index.html](http://www.lbp.org.uk/index.html)

## **Infrastructure**

### **Bowling green**

The bowling green is a full sized outdoor green. It has a pavilion with toilets, changing rooms, and office and storage area. A perimeter fence and yew hedge surrounds the green with pedestrian and vehicular access gates. There are shrub beds, amenity lawns, seating and paths within the boundary of the green. The Parks and Open Spaces staff maintain the green. The green is of a good standard and is maintained in accordance with accepted traditional maintenance practices. An independent professional agronomy report is undertaken each year and the recommendations and advice are followed where practical and within budgetary restraints. The green is for the use of the public and a resident public club. All players are required to purchase a season or day ticket.

### **Cricket Nets**

Cricket nets are located near the car park on Bostall Hill. These nets are very well used and are free to use by members of the public on a first come first served basis.

The nets would benefit from refurbishment.

### **Portable Changing Rooms**

These are situated on the edge of the park next to the car park. These are for use when there are events on the common.

### **Staff Compound**

There is a staff compound with public toilets (male, female and disabled) situated within it. The compound is surrounded with a fence and double gates. Many of the buildings make up the outer perimeter. A mess room, office, storage sheds and open storage areas make up the compound. This compound is in regular use by Parks and Open Spaces staff.

## **Main facilities**

### **Picnic Area**

The picnic area is situated next to the car park at Longleigh Lane behind the lodge. It is a fenced area and dog free. There are also several other picnic benches located on the edge of the field by the car park and by the staff yard. These are for general usage and are not in dog free areas.



Picnic Area

### **Sport and Recreation**

One of the main uses of Bostall Heath is the sports facilities (bowling green, cricket nets or casual football).

### **Photography**

Permission to take photographs or use moving picture recording equipment can be obtained from the Parks and Open Spaces Department.

### **Events**

The following events have been held either in Bostall Heath or Woods recently:

- Irvin Leisure Fun Fair
- Greenwich & Bexley Hospice - Fun Walk 2005
- Greenwich & Bexley Hospice - Fun Day 2005
- Family Fun Fair
- Greenwich & Bexley Hospice - Fun Day
- Dartford Orienteering Club
- Walk 2006
- Kabbadi Festival

### **Orienteering**

There has been an orienteering course on this site for some years, which linked up with the course over the boundary into the London Borough of Bexley at the Lesness Abbey site. However, the course is currently not in use and discussions have taken place with a local orienteering club to reinstate this course (along with the one at Oxleas Woods which has been restored).

### **Access**

The site is located within a mostly residential area and is accessible to the public from a number of points. The woods and heath is not locked and is accessible at all times to members of the public.

As the pathways are mostly informal paths and tracks there is limited access for people with wheelchairs and mobility vehicles.

### **Pathways**

Most of Bostall Heath and Woods are fully accessible to the public through a network of informal tracks and footpaths. Some paths have been specifically created to afford access whereas others are the result of repeated trampling along desire lines.

### **Parking**

The only car park provided for Bostall Heath and Woods is situated at Longleigh Lane opposite the bowling green. The car park provides approximately 25 car parking spaces. Due to fly-tipping in the past, width and height restriction were installed so that only domestic cars can use the car park (preventing lorries and large vehicles from entering).

### **Vehicular access**

The site can be accessed by vehicles using gates which are strategically situated around the perimeter of the site. The woods in most places cannot be accessed by vehicle as the paths and tracks are not suitable.

### **Public Transport Links**

Bostall Heath and Woods have good public transport links. The closest train station is Abbey Wood. The following buses travel to Bostall Heath and Woods, the B11, 99 (Heath); B11, 99, 96, 422 (Woods).

### **Park User Information**

Demographics of Abbey Wood Ward

As it is not possible at this stage to identify the exact demographics of these visitors, the census information shown below is only that of the local Abbey Wood Ward.

The resident population of Abbey Wood ward as measured in the 2001 census was 13,372. This is made up of 6,352 males (47.5%) and 7,020 (52.5%) females.

Ethnicity in Abbey Wood was 79.31% White, 11.65% Black or Black British, 5.71% Asian or Asian British, 2.27% were mixed and 1.06% was Chinese or another ethnic group.

The 2001 census indicated that the majority of people, 37.11%, were in the 20 – 44 age bracket, followed by 19.14% in the 46 – 64 age bracket and 16.65% are in the 5 – 15 age bracket. 39.62% of the 16 – 74 population were economically active full time, just under the borough figure of 40.84%. 42.87% of the ward had no access to cars or vans and 43.38% had access to one car or van.

**Stakeholders associated with the site**

Greenwich Council

Culture & Community Services (P&OS, Sports Promotion, Libraries & Museum Service)  
Strategic Planning (property Services, planning control, green chain)  
Chief Executives (Communications/Community Engagement)  
Neighbourhood Services (Neighbourhood Panels/Representatives)  
Children's Services  
Community Safety

Community

Friends of Bostall Heath  
Park Users

Businesses

Greenwich & Bexley Hospice

Politicians/Charities

Ward Councillors  
Local MP

Other Agencies

Fire Service  
Police Service

**Management**

The management of Bostall Heath and Woods is the responsibility of the Parks & Open Spaces department within Greenwich Council.

The management of Bostall Heath and Woods is the responsibility of the Parks & Open Spaces Department within Greenwich Council.

The Parks and Open Spaces Department is located within the Directorate of Culture and Community Services. The Parks and Open Spaces Operations manager is accountable for the overall management responsibility of the Service.

Individual management functions are devolved and key functions are identified as follows:

**Horticultural Maintenance**

- Park Keepers, Rangers and Parks Security
- Parks Development
- Fixed Equipment Playgrounds
- Ecology & conservation
- Tree & Woodland maintenance
- Administration – Sports lettings, complaints monitoring

### **Staff Presence**

Two full time park keepers and one part time park keeper manage Bostall Heath and Woods as a static site. Broadly, the role of the park keeper includes litter picking, establishing a positive presence within the park, grounds maintenance and to provide assistance where necessary.

The budgets used to maintain parks and open spaces are currently split into two areas, Horticulture Operations and Property Services.

### **Horticulture operations**

Currently it is not possible to identify expenditure specifically related to Bostall Heath and Woods, as finance generally come from a central fund.

### **Property Services**

The corporate budgets for both planned and responsive maintenance of the Council's property infrastructure are held by Greenwich Property Services in the Directorate of Strategic Planning. Planned works are carried out on a strict basis of corporate priorities and, as a consequence, P&OS has to compete against other service departments for a share of the limited funds available. Responsive repairs are carried out for minor items as and when they arise.

### **Previous Management Plans**

Greenwich Council commissioned an ecology study from the London Ecology Unit in 1989 and 1998. The 1998 version makes several detailed recommendations many of which are still valid for the ecological management and ongoing maintenance of Bostall Heath and Woods.

### **Marketing information, activities and approach**

There is no marketing budget for the Parks Service although information about local parks is available on the Greenwich Council website.

Activities and events that occur in parks get marketed and advertised depending on the nature of the activity or event.

## **PART II: WHERE DO WE WANT TO GET TO?**

### *VISION*

The vision for Bostall Heath and Woods is to conserve and enhance the heath and woodland for the benefit of the local community and of biodiversity.

### **General Objectives**

- To reduce Anti Social Behaviour
- To improve the health and well being of visitors and residents by offering a well maintained and quality park for active recreation and/ or relaxation
- To protect our biological assets and increase biodiversity
- To realize the potential of the park as a cultural and historical place to visit through a programme of publicity, information and events
- To work with the local community in identifying local priorities for funding of the park
- To ensure that the activities and events in our parks celebrate and promote the borough's rich diversity and that our parks are accessible to everyone

## *ANALYSIS & ASSESSMENT*

### **Heritage**

Bostall Heath and Woods has a relatively extensive history (see appendix II) although is possibly not widely known about outside of the local community. This could be explored further through consultation, and if it is found to be appropriate, interpretation may be of benefit at this site.

### **Ecology**

For its combination of native woodland and acid grassland Bostall Heath and Woods is possibly one of the most ecologically valuable areas within the borough.

The acid grassland glades are of particular significance as these areas contain the last few remaining remnants of heather in the borough. The 1998 LEU management plan notes that Bostall Heath and Woods is also one of London's most valuable areas of wildlife habitat. The UDP also notes that the site may be important for rare bats.

Lowland acid grassland is identified as a priority habitat for conservation in the UK Biodiversity Action Plan and the aims of the London Biodiversity Partnership in regards to acid grassland is to:-

- Ensure the protection and optimal management of acid grassland in Greater London
- Improve existing knowledge of its ecological value in the regional context
- Develop a more universal appreciation of the habitat and its wildlife and secure the involvement of Londoners in its conservation.

There are a number of factors which threaten acid grassland and heath land habitats, for example conflicting recreational demands and intensive management imposed to provide these areas and invasion by other species. Similarly, with woodlands, encroaching plants, disease and pests and other factors threaten woodlands. A full ecological assessment will be needed to be undertaken in order to develop maintenance plans for these species specifically in order to protect and conserve the biodiversity of these valuable habitats.

The provision of bat boxes may be of benefit to support the rare bat population.

### **Sport and Recreation**

Bostall Heath and Woods have the potential for enhanced sport and recreation provision. From observations, a need for improved cricket provision has been identified. The cricket nets already provided for are well used but would benefit from refurbishment. At the time of writing, funding for the refurbishment of the cricket nets is actively being sought.

### **Visitor & Community Needs**

The site has a Friends of Group which would benefit from on-going support from the Council.

While recommendations and suggestions can be put forward in this plan, a review (through discussions with Friends group, surveys and questionnaires, etc) needs to be undertaken with the community to determine current needs for the area and identify priorities for improvement.

**Summary of known issues or challenges**

**Antisocial Behaviour**

There have been problems with cars being taken into the woods driven around and then burnt. The perimeter of the site, where practical, has been posted prevent vehicle access. Motorcycles and quad bikes in recent times have been a particular problem and present an ongoing challenge in terms of safety to other users of the site, erosion of the paths and tracks and erosion of some of the plateaus of heath within the woods.

In the summer months (particularly school summer holiday period), the site suffers from fires being started within the woods.

**Consultation**

The results of the consultation are detailed in \*\*\*\* to be inserted following consultation

## *STRENGTHS*

- Newly established Friends of group who have indicated an interest in organising volunteer days
- Habitats are ecologically important with some rare species
- Bostall Heath and Woods is a large site and has the potential for improving/provision of additional community facilities for example, nature trail, interpretation (of wildlife/history)
- Bostall Heath and Woods benefits from park keeper presence
- Bostall Heath and Woods may be eligible for a Forestry Commission Woodland Improvement Grant
- Good quality bowling green

## *CHALLENGES*

- No ecological assessment/management plans for managing valuable habitats (e.g. acid grassland, woodland, heather)
- Limited access for people on mobility vehicles on those in wheelchairs
- Anti-social behaviour, in particular, illicit motor vehicle use, fires (in the summer months).

## *RECOMMENDATIONS*

- Share draft plan with key stakeholders (Friends of group and Ward Councillors) to seek comments on draft plan and incorporate as appropriate
- Continue to support Friends group and Volunteer Days initiative
- Undertake a programme of consultation with local community to identify current use and needs for the area, priorities for improvement etc
- Investigate developing specific species Management Plans (incorporating any relevant recommendations from the planned draft biodiversity Action Plan)
- Continue with restoration of the heath land
- Seek funding for the provision of bat boxes in the woodland
- Seek funding for improvements to cricket nets
- Reduce ASB within Bostall Heath and Woods
- Continue to work to objectives detailed in the Natural England Heath land Habitat Action Plan
- Seek Inward Investment as appropriate
- Improve awareness/use of site by all sections of the community

### Part III: HOW WILL WE GET THERE

Timescales as given in this document are as following;

Short Term – Within one-two years from adoption of this plan

Medium Term – Within three-four years from the adoption of this plan

Long Term – Five years and more from the adoption of this plan

#### ACTION PLAN

Recommendation	Action	Timescale (Long/Medium/ Short Term)	Responsibility	Reviewed
Share draft plan with key stakeholders (Friends of group and Ward Councillors) to seek comments on draft plan and incorporate as appropriate Undertake consultation with local community to identify issues such as current use, priorities for improvement, barriers to use	Contact Chair of Friends of group and Ward Cllirs	Short Term		
Continue to support Friends of Group and Volunteer Days initiative		Ongoing		
Investigate feasibility of developing of specific species Management Plans (incorporating any relevant recommendations from the planned Greenwich draft biodiversity Action Plan)	Investigate funding opportunities Await outcome of draft biodiversity plan Develop in conjunction	Long Term	Parks & Open Spaces	

Bostall Heath and Bostall Woods  
Management Plan 2008

Undertake audit of woodland (bird and mammal species)	with relevant officers Investigate funding opportunities	Long Term		
Continue with restoration of the heath land		Ongoing	Parks and Open Spaces	
Seek funding for the provision of bat boxes in the woodland	Investigate suitable funding streams and action as appropriate	Short Term		
Seek funding for improvements to cricket nets	Investigate suitable funding streams and action as appropriate	Ongoing	Parks and Open Spaces & Sports Promotion	
Reduce ASB in Bostall Heath and Woods	Undertake an assessment of ASB and work with police/fire brigade and relevant community reps to address issues specific to site	Ongoing		
Continue to work to objectives detailed in the Natural England Heath land Habitat Action Plan		Ongoing		

<p>Improve awareness/use of site by all sections of the community</p>	<p>Review how site is currently used and marketed. As part of consultation, investigate whether particular users are excluded from using the site. Investigate ways of improving marketing of site (through the use of different mediums etc) and through improvements to current marketing material</p>	<p>Medium Term</p>		
<p>Seek Inward Investment as appropriate</p>	<p>Use findings from consultation to inform proposed forthcoming Inward Investment Strategy Provide Friends of group with information on funding streams (applicable to Friends of) Seek funding as appropriate</p>	<p>Ongoing</p>		

## **PART IV: HOW WILL WE KNOW WHEN WE'VE ARRIVED**

### *MONITORING & REVIEW*

The Action Plan to the Bostall Heath and Woods Management Plan will reviewed and updated every five years, and the Action Plan reviewed annually by Parks Management Staff responsible for Bostall Heath and Woods. .

A working document copy of the Management Plan will be kept within the parks office so that issues and changes that arise can be documented.

## **APPENDIX I: Legislation, policies and strategies affecting park management**

As highlighted earlier in the plan, Greenwich Council's Parks & Open Spaces department operates within a wide framework of national, regional and local policy statements and strategies. The main documents impacting on the development of this plan are listed below.

### **The Greenwich Strategy**

The Greenwich Strategy sets out the vision for Greenwich Borough as being the place to live, work, learn and visit. This vision underpins all of the strategies produced by Greenwich Council and directly impacts on all service plans and service delivery.

### **The Cultural Strategy**

Parks & Open Spaces is one of six 'areas' considered by the Cultural Strategy. The Strategy has five over-arching themes: - Equality and Access, Sustainability, the Cultural Economy, Achievement and Excellence and Partnerships. All of these aims are relevant to this management plan and have been considered in developing the opportunities and priorities for this site.

### **Green Space Strategy**

The Green Spaces Strategy sets out the Council's strategic intentions for its green assets and its vision of the positive contribution that Greenwich's open networks make to our lives.

The thematic objectives (community safety, biodiversity, education and culture, culture & events, tackling inequality, sport, health & well being) are all relevant to the management plan for Bostall Heath and Woods.

### **Parks & Open Spaces Service Plan 2006-7**

The Parks & Open Spaces department aims to develop, manage, ensure accessibility and maintain to a high standard the borough's Parks, Open Spaces, Woodlands, Tree Stock, Cemeteries, Playgrounds, Sports Pitches, Allotments and other outdoor facilities. To meet the needs of the community and deliver the Council's core objectives where applicable to the service, and specifically regarding the provision of a clean and well cared for environment and supporting Health and Quality of Life for the local community.

### **ISO 9001:2000 – Quality Management System**

Quality Management System ISO 9001: 2000 is used by organisations to manage their activities and resources to guarantee a quality service. This management system is based on eight quality management principles:

Customer Focus

Leadership

Involving People

Process Approach

System Approach to management

Continual Improvement  
Factual Approach to decision making  
Supplier relationship, which benefit both sides.

The Parks & Open Spaces department is currently ISO 9000 accredited.

### **Unitary Development Plan**

Local Councils have a duty to prepare a Development Plan by law. The Greenwich Unitary Development Plan (UDP) sets out the vision for use of the land in the Borough, and provides the main guidance for making decisions on individual planning proposals. The document is intended to cover the period 2001 – 2011 (or 2016 in some instances) it is a legal document with the following purposes

To provide a framework of acceptable uses within the Borough, defining areas where development is not desired or where it needs to be carefully directed and;  
To provide a detailed basis for the control of development

Bostall Heath and Woods are designated as the following in the UDP.

Metropolitan Open Land (MOL)  
Green Chain  
Green Chain Walk  
Conservation Area  
Area of Special Character of Metropolitan Importance

The UDP may be viewed at the Directorate of Strategic Planning, Planning Department, Peggy Middleton House, Woolwich, SE18, or alternatively at a local library.

#### Metropolitan Open Land

The UDP designates Bostall Heath and Grounds as Metropolitan Open Land (MOL). Policy references O1, O2, O3 and O4 under the section 'Protecting Open Land' set out what the acceptable land uses and allowable developments are within areas designated as MOL. These policy references are too lengthy to reproduce here. The policies are broadly meant to control development or alterations to existing land that would be inappropriate to MOL and have an adverse affect on the character and usage of the open space.

#### Green Chain

The UDP also designates the site as Green Chain. Policy reference O5 under the section 'Protecting Open Land' sets out what the objectives of this designation are. The objectives are as follows

To improve and encourage the provision of suitable recreational facilities, with an emphasis on those serving a wide area of South East London and/or requiring open land.  
To safeguard the open land from built development and maintain its positive contribution in providing a visual and physical break in the built-up area of London.  
To conserve and enhance the visual amenity and ecological aspects of the landscape.  
To improve public access to and through the area.

To promote an overall identity for the area in order to increase public awareness of available recreational facilities.

To encourage the collaboration and co-operation of the various public and private agencies, owners, organisations, and clubs, etc. within the area to achieve the above objectives.

#### Community Benefits

O10 The Council will seek to secure improvement and enhancement of existing parks and public open spaces, where major development places increased demand on existing areas, and, where appropriate, the creation of new parks and public open spaces in line with Policies O9 and C3, through planning obligations and conditions on planning permissions in line with Policy SC2.

#### Park Facilities

O12 The Council will seek to enhance open space by the provision and encouragement of appropriate park facilities (e.g. seating, children's play equipment, refreshment facilities, outdoor tennis courts, pitch and putt, sports pitches and changing facilities and Arts, Culture and Entertainment facilities, such as open air performance spaces, sculpture and visual imagery and areas for cultural exhibition and study) within suitable parks and public open spaces. Facilities should be of a high standard of design and quality and respect local nature conservation interests. Such facilities should be safe to use and accessible to all. (See Policies D5, D6 and D7).

#### Green Chain Walk

Policy O14 refers to the Green Chain Walk, which runs through the site.

O15 Existing footpaths will be safeguarded and new footpaths created to and through open spaces and places of interest, where they do not adversely affect nature conservation. The Council will endeavour to create a sign posted network of continuous and circular routes. In particular the 'Green Chain Walk' footpath network will be improved and extended and new links created wherever possible.

The UDP then says that the Mayor's Transport strategy has identified the Green Chain Walk as being one of six strategic walks in London Section 2.4

#### **The Bio Diversity Action Plan**

The Greenwich Biodiversity Action Plan will be the first co-ordinated approach to conserving Greenwich's biodiversity. The aim of the plan is:

'To ensure the conservation, enhancement and public appreciation of the biodiversity of the London Borough of Greenwich'.

The Biodiversity Action Plan focuses on locally important habitats and species and has actions drafted to ensure that they cover all relevant habitats and species. Initially actions may be focussed on those under the most pressure or where most advantage can be gained. However, it allows for all important habitats and species to be covered.

The Biodiversity Action Plan has been developed in partnership with local and regional groups and organisations and is currently in a draft stage. Once the final draft is agreed it will be released for wider consultation before a final plan is adopted.

### **Legislation**

Alcohol Consumption in Public Places Order 2003  
Clean Neighbourhoods Act 2004  
Control of Pesticide Protection Act 1986  
Country Code 1981  
Country side and Rights of Way Act 2000 and increments  
Countryside & Right of Way Act 2000  
Disability Discrimination Act 1998  
Health & Safety at Work Act 1998  
Litter Act 1983  
Ministry of Housing and Local Government Provisional Order Confirmation (Greater London Parks & Open Spaces Act )1967  
Occupiers Liability Act 1957  
Road Traffic Act 1988 (as amended 1991)  
The 2004 Country Code  
The Anti Social Behaviour Act 2003  
The Dangerous Dogs Act 1991 & Dogs Act 1871??  
The National Parks & Access to the Countryside Act 1949  
The Weeds Act 1959  
The Wildlife & Countryside Act 1981

## **APPENDIX II: Site Heritage and History**

Bostall Heath and Woods were given in the year 811 by Coenulf, King of Mercia to the Church of Rochester. In the 16th century it was the property of John Cutte who in 1504 sold it to Abbot and Convent of Westminster. At some time the trustees of Queens College Oxford inherited the Manor. In October 1877 the Metropolitan board of works purchased sixty four acres of Bostall Heath for £6,000.00.

Clam Field was purchased at a later date. It is not clear exactly what part of the heath was purchased but there is reference to Sir Julian Goldsmith originally owning Bostall Wood or as it was sometimes called "Old Park". There is still a road called Old Park, which leads into Bostall Woods.

The name Bostall (or Borstall) is Anglo-Saxon in origin, Bos meaning Ox or Cow and Borse a calf of six months old. In Sussex the term Bostall is generally applied to "a winding way up the side of a very steep hill". The Norman adjective bosquet (Angalis "bosky"), wood, and boscage a small wood.

A chalk cave adjacent to the wood in Federation Way was dug to provide building materials for the Co-op Estate at the turn of the last Century. It is still complete and is home to a colony of bats.

'Turpins Cave', a 17<sup>th</sup> Century chalk mine was one of probably many dug along the Wickham Lane corridor. Legend has it that Dick Turpin, the famous highwayman allegedly hid in the cave and waited for the bar maid Fanny to give him a signal by leaving a lamp in the window when it was safe to come out. There is a public house called "Fanny On The Hill" along Wickham Street. This cave is situated at the end of Cemetery Lane. The cave has for many years been bricked up as it was dangerous. The chalk from the mine was used for brick making in Stevens brickfield that was situated near East Wickham open space until its relocation to Swanley in 1932. Turpin's cave was last excavated for an archaeological dig in the 1980's. There are also a number of Dene holes, which date back to the middle ages. These were used for fertiliser and once discontinued, were bordered over and back-filled. A number have opened up over the years and have been filled in by the Council.

### **Shornells**

Henry Hudson Church was born in Woolwich on 1st May 1827 and built a large house on the heath called Shornells. Henry Hudson was head of the firm Church, Quick and Whincop architects, surveyors and estate agents. They built several public buildings in the borough namely Woolwich Baths and laid out Plumstead and Woolwich cemeteries. Mr Church died 30th January 1914 and Shornells was sold in 1918, then it was bought by the Royal Arsenal Co-operative Society (R.A.C.S.) on 25th September 1920 for £4,750.00. The house became a hospital in World War II and then a rest home and education centre. Later on it became a guesthouse and meeting place. In more recent years there were several fires and the house became badly vandalised. Eventually the house was pulled down, as it had become unsafe.

Greenwich and Bexley Hospice. It was recognised that because the nearest hospice to Greenwich and Bexley was St Christopher's at Sydenham there was a need for a hospice nearer to the boroughs. Pat Jeavons and Don Sturrock were the founding members of the charity set up to provide a hospice. In 1988 the Co-operative wholesale Society indicated that they were prepared to negotiate the land where Shornell has stood. In September 1991 the site was purchased for £1. The hospice was opened 7th February 1994 with several developments since that date. Although the hospice is not in the ownership of Greenwich Council and therefore should not be a part of this plan it worthy of mention as it plays a significant role in the community and is situated within Bostall Woods.

## **APPENDIX III: REFERENCES**

Park Explorer, [www.parkexplorer.org.uk](http://www.parkexplorer.org.uk) -`-

London Biodiversity Partnership, [www.lbp.org.uk/index.html](http://www.lbp.org.uk/index.html)

Massini, P, 1989, Bostall Heath and Woods Management Brief, London Ecology Unit

Shearmur, 2004, Bostall Heath and Woods Draft Management Plan

Nicholson, B, 1985, Wildlife Habitats in Greenwich, London Wildlife Trust

## APPENDIX V: PARKS AND OPEN SPACES MANAGEMENT STRUCTURE

